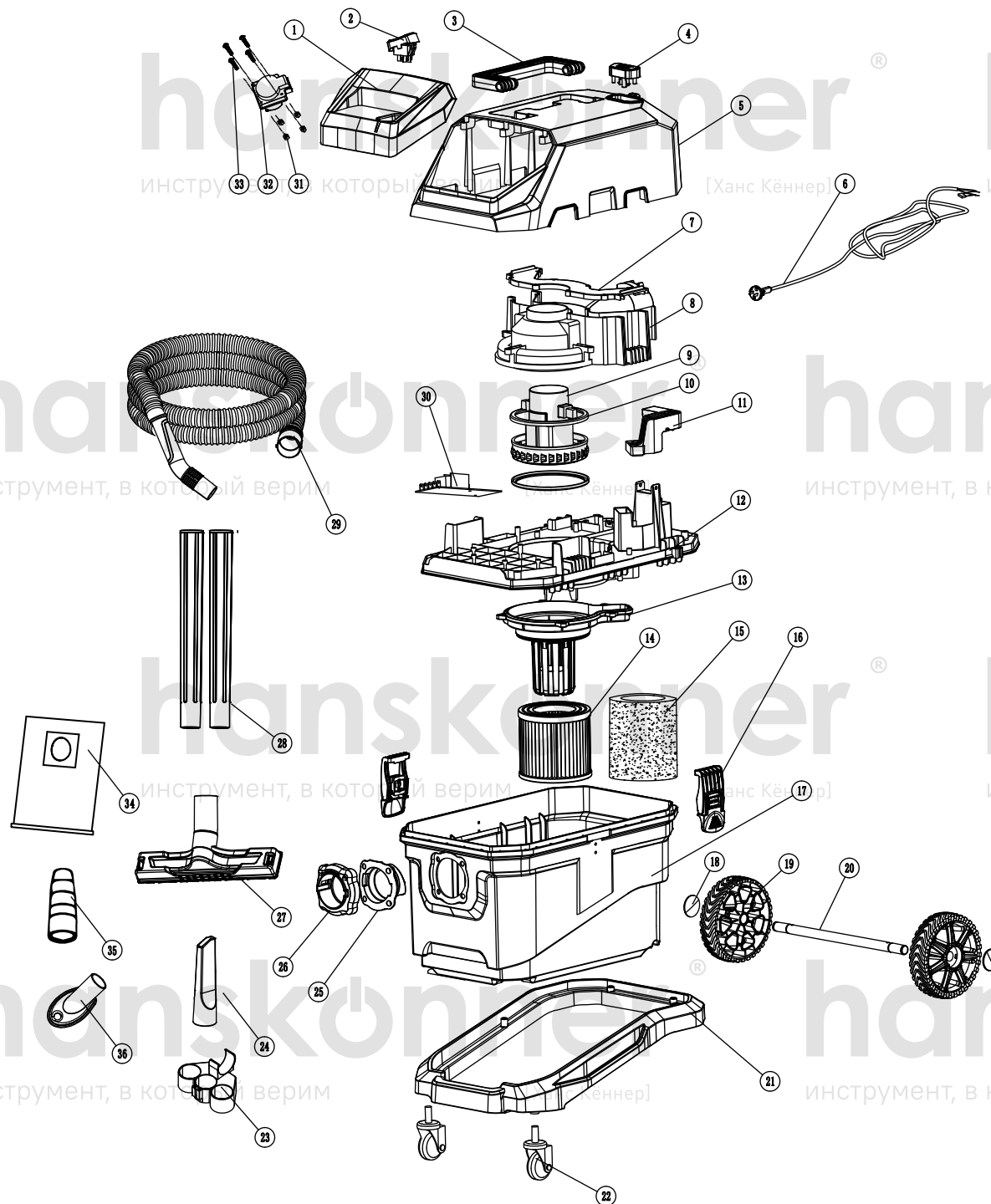


## HVC1630



| NO | DESCRIPTION        |
|----|--------------------|
| 1  | SWITCH PANEL       |
| 2  | SWITCH             |
| 3  | HANDLE             |
| 4  | DUST SHAKE BUTTON  |
| 5  | TOP COVER          |
| 6  | POWER CORD         |
| 7  | AIR DUCT COVER     |
| 8  | MOTOR COVER        |
| 9  | MOTOR              |
| 10 | MOTOR SEALING RING |
| 11 | DUST SHAKE COVER   |
| 12 | BOTTOM COVER       |
| 13 | BOTTOM COVER BAR   |
| 14 | FILTER             |
| 15 | FILTER SPONGE      |
| 16 | BUCKLE ASSEMBLY    |
| 17 | PLASTIC DRUM       |
| 18 | ROLLER COVER       |
| 19 | BIG ROLLER         |
| 20 | CROSS BAR          |
| 21 | BASE               |
| 22 | UNIVERSAL WHEEL    |
| 23 | ACCESSORY BRACKET  |
| 24 | LONG FLATTING      |
| 25 | INTAKE DUCT SEAT   |
| 26 | INTAKE DUCT        |
| 27 | RECTANGULAR BRUSH  |
| 28 | TUBE               |
| 29 | HOSE ASSEMBLY      |
| 30 | PCB                |
| 31 | NUT                |
| 32 | SOCKET             |
| 33 | SCREW              |
| 34 | DUST BAG           |
| 35 | ADAPTER            |
| 36 | OVAL DUST NOZZLE   |

HVC1630-EX-RU250603